

- EQUIPMENT DATASHEET -

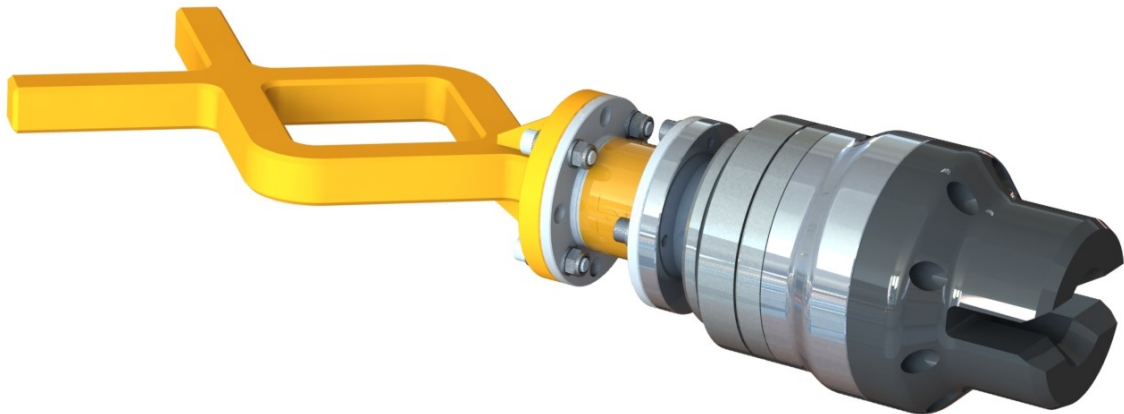
MANUAL LOW TORQUE TOOL

(API 17H / ISO 13628-8 TYPE A, B & C)

Overview:

The Manual Torque Tool is designed to allow ROV manipulator operation of API 17H / ISO 13628-8 Type A, B and C low torque rotary valve interfaces. The tool features an adjustable torque limiting clutch mechanism, which acts to limit the maximum torque that can be transmitted from the ROV manipulator to the valve interface during an ROV intervention operation, mitigating against the possibility of over-torquing and damaging the valve or valve stem.

The tool's end effector is designed to be capable of interfacing onto either a type A (flat paddle) or a type B & C (T-bar) valve handles. This allows for operations to be conducted on differing valve types during a single dive, negating the need to retrieve the tool to surface for reconfiguration.



Key Points:

- Adjustable maximum torque setting from 20 to 200 Nm.
- Tool supplied with a calibrated torque wrench to allow accurate torque setting and pre-dive verification.
- Simple torque setting adjustment without the requirement to dismantle the tool.
- Lightweight construction and optimised tool length allow for easy ROV operations.
- Multi-function end effector design allows operations to be conducted on differing valve types without requiring to be reconfigured on deck.
- Any ROV style handle can be supplied (fishtail handle shown).
- Fitted with torque resistant compliant mount.
- Made entirely from corrosion resistant materials.
- Suitable for use at any water depth.
- Weight in air – 8kg
- Weight in water – 6kg
- Supplied in a foam lined transit case.
- Lower torque version available, contact us for details

Contact us for more information, cost and delivery time.